

CHARLESBANK

Real Estate

Carole Talley, Realtor®

617-492-2265

www.charlesbankre.com

carole@charlesbankre.com

Two Garage Spaces!

Light shines through a wall of bay windows overlooking the Ft. Washington Park flag and Boston skyline. *Two* deeded parking spaces in an underground garage with elevator direct to your floor—plus a unique master suite lend special appeal.

The layout adds to the unit's quiet and privacy. A full master suite—bedroom, walk-in closet, another closet, and tiled bath—flanks one side of the living room. On the other is a second bedroom and bath.

The tiled kitchen is laid out for cooking ease with lots of counterspace and cabinets. Passthrough to living/dining room.

Exceptional closet space. Basement storage. In-unit laundry. On-site super. Year-round A/C and heating via heat pump.

This is an estate sale. The administrator has a fiduciary duty to accept the highest and best offer.

Cambridgeport Commons is a planned community of townhouses and mid-rise brick buildings surrounding landscaped wooded courtyards. Convenient to Charles River recreation, MIT, BU, the LMA, and the Mass. Pike, this fine home will let you enjoy carefree city living at its best!

Living Area: 966 sq. ft.
Assessment: \$404,500
Taxes: \$3,430.16 without Residential Exemption
Condo Fee: \$414.64, includes gas and hot water
Heat/AC: Central Heat and Air Conditioning by Heatpump
Parking: Two Deeded Spaces in Underground Garage
Estate Sale: Subject to License to Sell from Probate



20 Chestnut Street
Unit 504
Cambridge
\$429,000

For Further Information:

Charlesbank Real Estate
Carole Talley, Realtor®

25 Magazine Street
Cambridge, MA 02139

617-492-2265

fax: 617-812-5883

www.charlesbankre.com

carole@charlesbankre.com

The agent/broker represents the seller in the marketing, negotiating, and sale of this property. However, the agent/broker has an ethical and legal obligation to show honesty, fairness, and good faith to the buyer. Information regarding this property is deemed reliable but is subject to error, withdrawal, or change. No warranty or representation is made as to the accuracy thereof.



CHARLESBANK

Real Estate

Carole Talley, Realtor®

617-492-2265

www.charlesbankre.com

Cambridgeport Commons

20 Chestnut Street

A planned community of townhouses and mid-rise condos nestled around quiet inner courtyards, yet just three short blocks from the Charles River.



CHARLESBANK

Real Estate

Carole Talley, Realtor®

617-492-2265

www.charlesbankre.com

Unit 504

Living Room and Dining Area

Room-width Bay Window

Hypo-Allergenic Wall to Wall Carpet

Passthrough to Kitchen



Note: Some photos are of model unit.

CHARLESBANK

Real Estate

Carole Talley, Realtor®

617-492-2265

www.charlesbankre.com



Bedrooms

Master Suite:

Bedroom and Bath

Privacy Corridor

Walk-in Closet

Closet

Second Bedroom

Next to Second Bath and

Linen Closet



CHARLESBANK

Real Estate

Carole Talley, Realtor®

617-492-2265

www.charlesbankre.com

Unit 504



Kitchen

Designed for ease of cooking

Passthrough to Living/Dining Room

Tile floor

In-unit Laundry



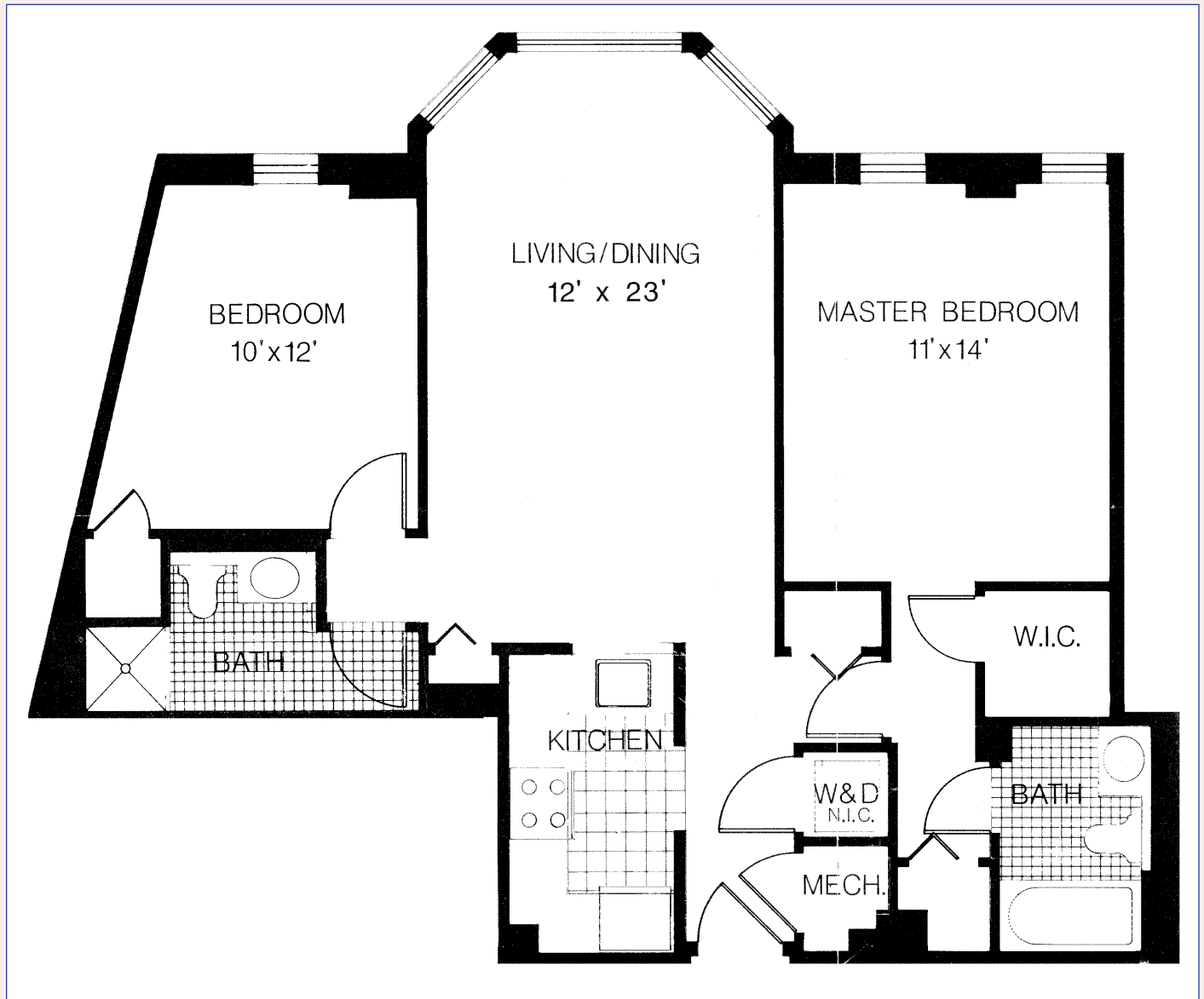
CHARLESBANK

Real Estate

Carole Talley, Realtor®

617-492-2265

www.charlesbankre.com



Cambridgeport Commons

20 Chestnut Street • Unit 504

966 sq. ft.