

CHARLESBANK

Real Estate

Carole Talley, Realtor®

617-492-2265

www.charlesbankre.com

carole@charlesbankre.com

Fulton Heights Gem!

This meticulously maintained 3-bedroom plus family room/study Colonial/Gambrel on Medford's famous hill is nestled in a quiet neighborhood of well-kept homes, parks, and conservation land. With quick I-93 access to Boston and tech centers or the communities on the Mystic River, it is an ideal commuter's home.

Many recent renovations and updates mean this family-friendly home is ready to move in:

- Stainless steel and granite kitchen
- Bath with skylight, Jacuzzi, and glass shower, plus half bath on 1st floor
- Carefree deck, established lawn, sprinkler system, and storage shed
- Freshly painted inside and out, new roof, new bow window

Living Area: 1,696 sq. ft. **Land Area:** 4,245 sq. ft.

Assessment: \$320,300 **2012 Taxes:** \$3,853.21

Heat: Steam by Oil, plus Gas Fireplace

Parking: Garage (under) and Paved Driveway

Extras: 1,260 sq. ft.: Basement (walkout through Garage), Garage with Workbench, Attic, Enclosed Porch/Foyer. Storage Shed

Disclosure: Window Treatments are negotiable



57 Watervale Road
Medford
\$399,000

For Further Information:

Charlesbank Real Estate
Carole Talley, Realtor®

25 Magazine Street
Cambridge, MA 02139

617-492-2265

fax: 617-812-5883

www.charlesbankre.com

carole@charlesbankre.com

The agent/broker represents the seller in the marketing, negotiating, and sale of this property. However, the agent/broker has an ethical and legal obligation to show honesty, fairness, and good faith to the buyer. Information regarding this property is deemed reliable but is subject to error, withdrawal, or change. No warranty or representation is made as to the accuracy thereof.



CHARLESBANK

Real Estate

Carole Talley, Realtor®

617-492-2265

www.charlesbankre.com

Living Room & Dining Area

Full-width of the House
South-facing Bay Window
Gas Fireplace
China Cabinet
Hardwood floors



CHARLESBANK

Real Estate

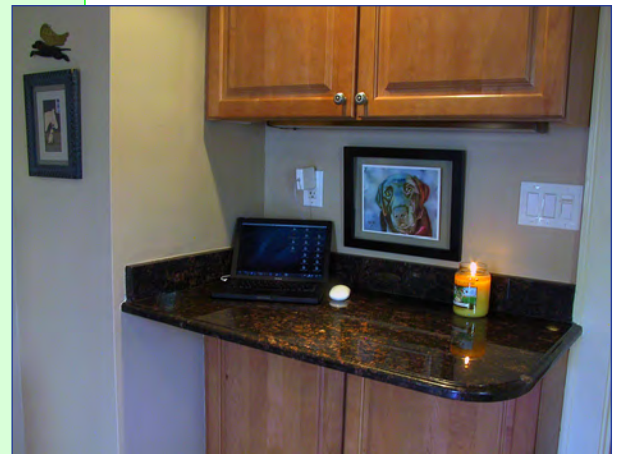
Carole Talley, Realtor®

617-492-2265

www.charlesbankre.com

Kitchen

Recently Renovated
Stainless Steel
Appliances,
Granite Countertops
Glass-front Cabinets
Ceramic Tile Floor
Computer Nook
Half Bath
Adjacent to Deck
and Family Room



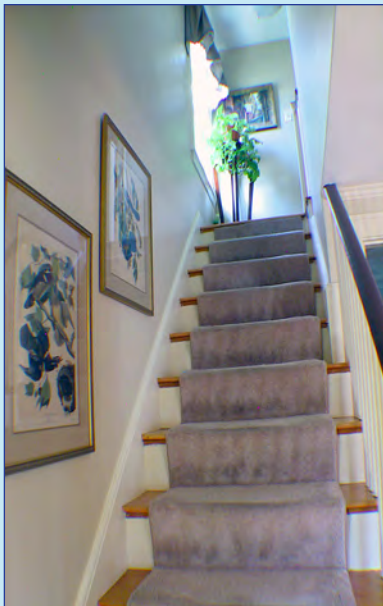
CHARLESBANK

Real Estate

Carole Talley, Realtor®

617-492-2265

www.charlesbankre.com



Master Bedroom

Full-width of House

Sitting Area

Double-wide Closet

Computer Nook/Compact Office

CHARLESBANK

Real Estate

Carole Talley, Realtor®

617-492-2265

www.charlesbankre.com



Baths

Jacuzzi
Skylight
Glass Shower
Half-bath on First Floor



CHARLESBANK

Real Estate

Carole Talley, Realtor®

617-492-2265

www.charlesbankre.com

Bedrooms

Second Floor

Master Bedroom 11x20

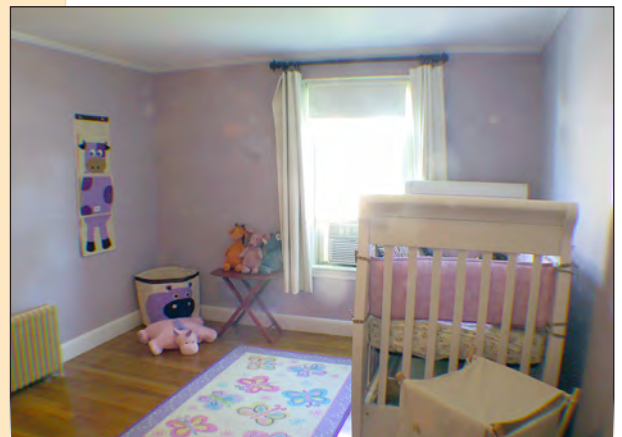
Second Bedroom 13x16

Third Bedroom 10x11

First Floor

Fourth Bedroom/
Office/Family
Room

11x11



CHARLESBANK

Real Estate

Carole Talley, Realtor®

617-492-2265

www.charlesbankre.com



Outdoors/Yard

Composite Deck

Storage Shed

Lush Lawn, Sprinkler System

New Retaining Wall

CHARLESBANK

Real Estate

Carole Talley, Realtor®

617-492-2265

www.charlesbankre.com

